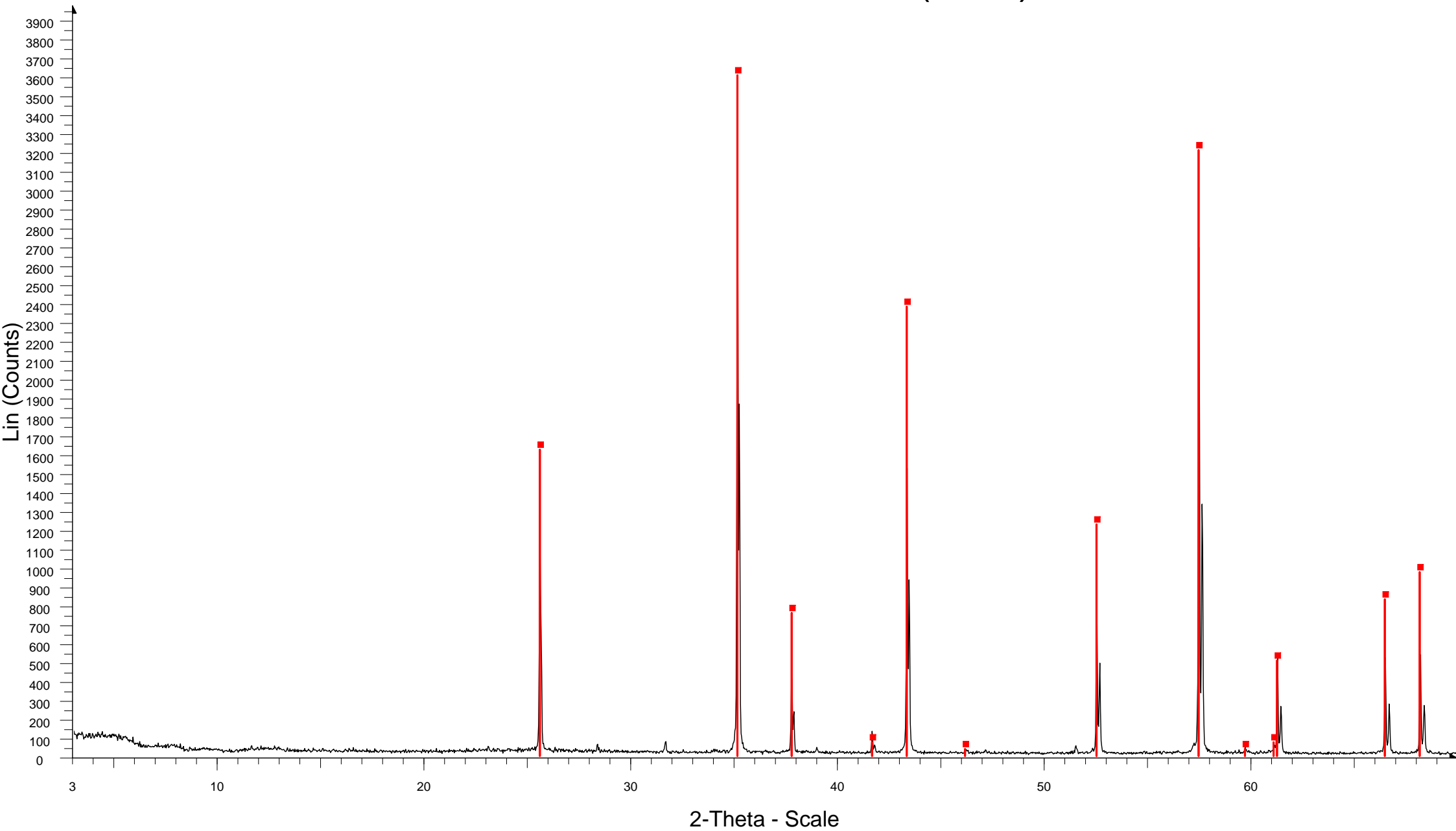


CORINDON BRAGG-BRENTANO (D8C) 11-05-09



☒ CORINDON BRAGG-BRENTANO 11-5-09 - File: CORINDON BRAGG-BRENTANO 11-5-09.raw - Type: 2Th/Th locked - Start: 3.000 ° - End: 69.986 ° - Step: 0.030 ° - Step time: 1. s - Temp.: 954 °C - Time Started: 5 s - 2-Theta: 3
Operations: Import

☒ 00-046-1212 (*) - Corundum, syn - Al₂O₃ - Y: 100.00 % - d x by: 1. - WL: 1.5406 - Rhombo.H.axes - a 4.75870 - b 4.75870 - c 12.99290 - alpha 90.000 - beta 90.000 - gamma 120.000 - Primitive - R-3c (167) - 6 - 254.808 - I/lc PDF

INFORME DE LA CALIBRACIÓN

Corindon D8C BRAGG-BRENTANO 11-05-09

Range Number : 1

R-Values

Rexp : 14.48 Rwp : 20.32 Rp : 15.49 GOF : 1.40
Rexp` : 12.54 Rwp` : 17.59 Rp` : 13.90 DW : 1.39

Instrument

Primary radius (mm) 250
Secondary radius (mm) 250
Receiving slit width (mm) 0.2
Divergence angle (°) 0.5
Full Axial Convolution
 Filament Length (mm) 12
 Sample Length (mm) 15
 Receiving Slit Length (mm) 12
 Primary Sollers (°) 2.3
 Secondary Sollers (°) 2.3

hkl Phase - 1 Lebail method

Phase name Corindon
R-Bragg 1.958
Spacegroup r-3c
Cell Mass 0.000
Cell Volume (Å³) 254.5732(61)
Wt% - Rietveld 0.000
Lattice parameters **SRM 1976a Certificate**
 a (Å) 4.757103(48) **4.758877(113)**
 c (Å) 12.98964(17) **12.992877(164)**

h	k	l	m	d	Th2	I	
0	1	2	6	3.47891	25.58479	3.53	=
1	0	4	6	2.55035	35.15985	21	
1	1	0	6	2.37855	37.79205	3.07	
0	0	6	2	2.16494	41.68568	0.867	
1	1	3	12	2.08471	43.36943	17	
2	0	2	6	1.96350	46.19650	0.221	
0	2	4	6	1.73946	52.57021	14	
1	1	6	12	1.60105	57.51733	55.9	
2	1	1	12	1.54606	59.76638	0.698	
1	2	2	12	1.51422	61.15594	1.03	
0	1	8	6	1.51061	61.31757	11.4	
2	1	4	12	1.40406	66.54499	15.5	
0	3	0	6	1.37326	68.23995	17.2	
1	2	5	12	1.33560	70.44388	1.48	