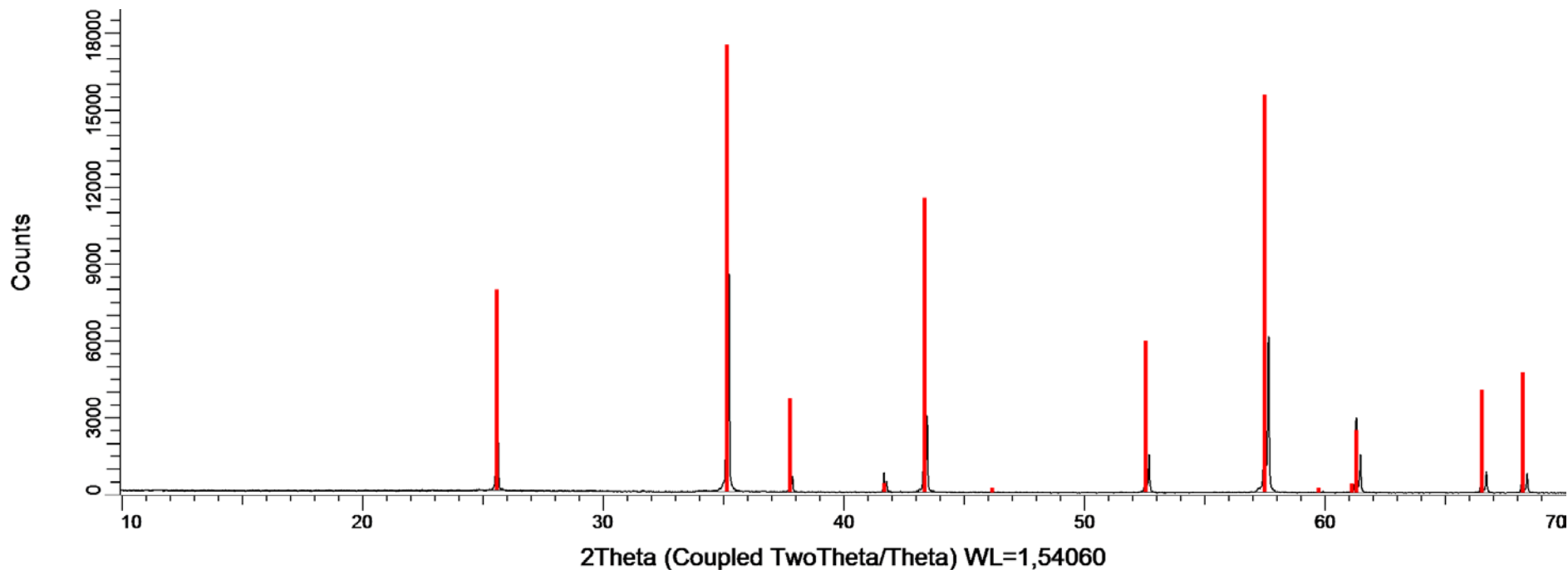


PATRÓN DE CORINDÓN 02-02-17



☒ CORINDON 02-02-17. Barrido tipo Θ - Θ . Rango: 3 a 70 °2 Θ . Paso: 0,015. Tiempo por paso: 0,1 seg. Detector: Lynxeye.

☑ Patrón de Corindón. Trigonal – a 4.7588770 - c 12.992877 – R-3c (167) – Z 6 – V 254.81

30 de marzo de 2017

Corindon D8I-90 02-02-17

R-Values

Rwp : 9.49 GOF : 1.36

Instrument

Primary radius (mm)	250
Secondary radius (mm)	250
Linear PSD 2Th angular range (°)	3.3
FDS angle (°)	0.5
Beam spill, sample length (mm)	25.4
Intensity corrected	
Full Axial Convolution	
Filament length (mm)	12
Sample length (mm)	25.4
Receiving Slit length (mm)	12
Primary Sollers (°)	2.5
Secondary Sollers (°)	2.5

hkl Phase - 1 Le Bail method

Phase name	Corindon
R-Bragg	0.307
Spacegroup	r-3c
Cell Volume (Å ³)	254.852(6)
Crystallite Size	
Cry size Lorentzian	1100(170)
Cry size Gaussian	660(70)
k: 1 LVol-IB (nm)	380(30)

Lattice parameters

a (Å)
 c (Å)

SRM 1976a Certificate
 4.75911(5) **4.758877(113)**
 12.99289(13) **12.992877(164)**

h	k	l	m	d	Th2	I	=
0	1	2	6	3.48021	25.57508	9.84	
1	0	4	6	2.55116	35.14835	83.9	
1	1	0	6	2.37956	37.77547	7.34	
0	0	6	2	2.16548	41.67474	5.78	
1	1	3	12	2.08551	43.35199	49.5	
2	0	2	6	1.96430	46.17662	0.472	
0	2	4	6	1.74011	52.54909	41.9	
1	1	6	12	1.60157	57.49667	220	
2	1	1	12	1.54671	59.73872	1.9	
1	2	2	12	1.51484	61.12797	2.21	
0	1	8	6	1.51103	61.29897	60.7	
2	1	4	12	1.40461	66.51563	45.6	
0	3	0	6	1.37384	68.20715	44.5	
1	2	5	12	1.33610	70.41338	0.284	

30 de marzo de 2017

CITIUS, Tfno. 954559747 - 954559746, Fax. 954559753
 Apdo. 1152, 41080 Sevilla, Spain

2 de 2