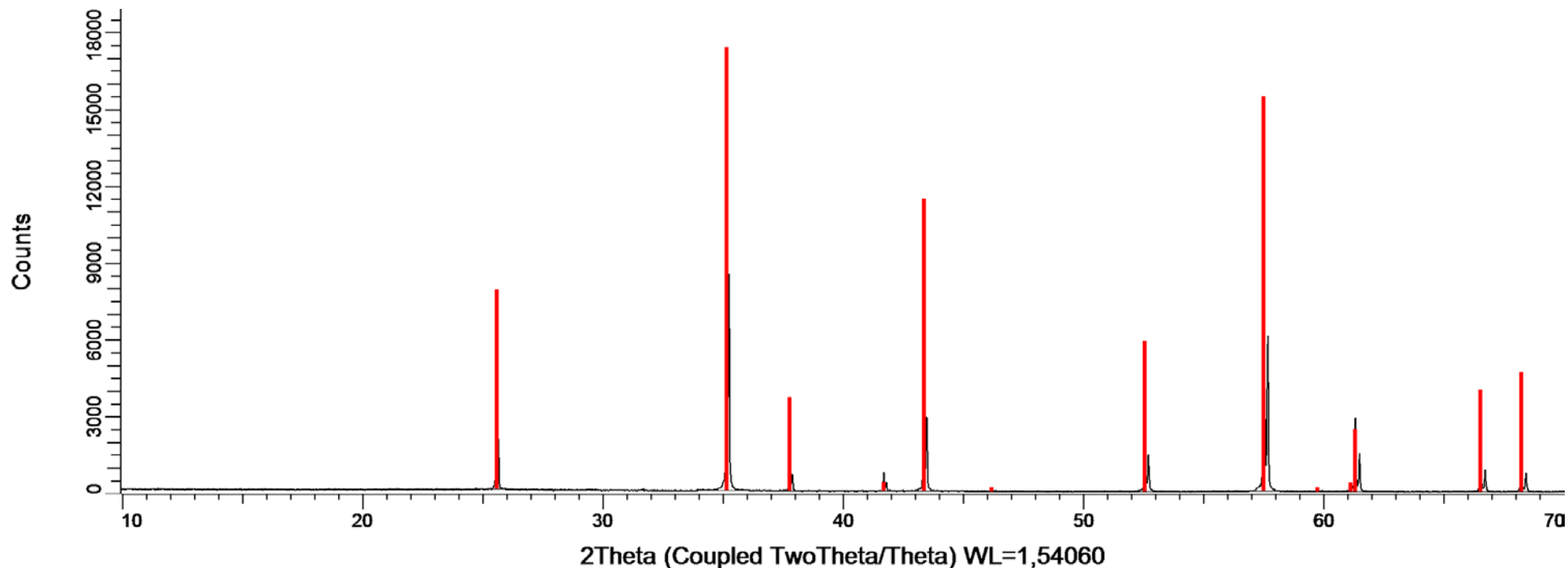


## PATRÓN DE CORINDÓN 06-02-17



☐ CORINDON 06-02-17. Barrido tipo  $\theta$ - $\theta$ . Rango: 3 a 70 °2 $\theta$ . Paso: 0,015. Tiempo por paso: 0,1 seg. Detector: Lynxeye.

☐ Patrón de Corindón. Trigonal – a 4.7588770 - c 12.992877 – R-3c (167) – Z 6 – V 254.81

30 de marzo de 2017

## Corindon D8I-90 06-02-17

### R-Values

Rwp : 14.33      GOF : 2.04

### Instrument

Primary radius (mm)	250
Secondary radius (mm)	250
Linear PSD 2Th angular range (°)	3.3
FDS angle (°)	0.5
Beam spill, sample length (mm)	25.4
Intensity corrected	
Full Axial Convolution	
Filament length (mm)	12
Sample length (mm)	25.4
Receiving Slit length (mm)	12
Primary Sollers (°)	2.5
Secondary Sollers (°)	2.5

### hkl Phase - 1 Le Bail method

Phase name	Corindon
R-Bragg	1.620
Spacegroup	r-3c
Cell Volume (Å <sup>3</sup> )	254.645(8)
Crystallite Size	
Cry size Lorentzian	900(180)
Cry size Gaussian	1000(200)
k: 1 LVol-IB (nm)	420(60)

### Lattice parameters

a (Å)  
 c (Å)

### SRM 1976a Certificate

4.75787(7)      **4.758877(113)**  
 12.98907(19)    **12.992877(164)**

h	k	l	m	d	Th2	I	=
0	1	2	6	3.47927	25.58211	9.49	
1	0	4	6	2.55044	35.15856	82.4	
1	1	0	6	2.37894	37.78569	7.24	
0	0	6	2	2.16485	41.68756	5.47	
1	1	3	12	2.08495	43.36421	49.4	
2	0	2	6	1.96378	46.18949	0.464	
0	2	4	6	1.73964	52.56437	42.5	
1	1	6	12	1.60113	57.51419	218	
2	1	1	12	1.54630	59.75590	1.94	
1	2	2	12	1.51445	61.14572	2.28	
0	1	8	6	1.51059	61.31863	59.6	
2	1	4	12	1.40423	66.53569	44.8	
0	3	0	6	1.37348	68.22737	43.6	
1	2	5	12	1.33574	70.43516	1.47	

30 de marzo de 2017

CITIUS, Tfno. 954559747 - 954559746, Fax. 954559753  
 Apdo. 1152, 41080 Sevilla, Spain

2 de 2