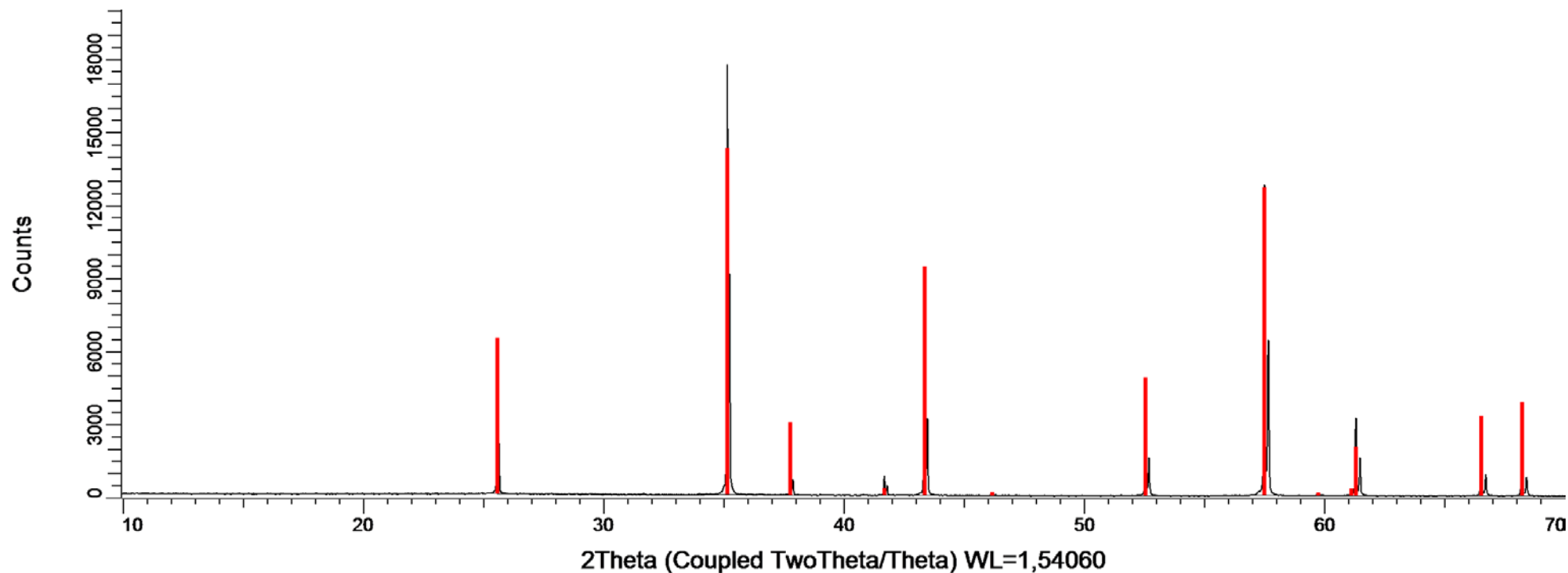


PATRÓN DE CORINDÓN 12-02-16



☒ CORINDON 12-02-16. Barrido tipo θ - θ . Rango: 3 a 70 °2 θ . Paso: 0,015. Tiempo por paso: 0,1 seg. Detector: Lynxeye.

☑ Patrón de Corindón. Trigonal – a 4.7588770 - c 12.992877 – R-3c (167) – Z 6 – V 254.81

Corindon D8I-90 12-02-16

R-Values

Rwp : 11.90 GOF : 1.72

Instrument

Primary radius (mm)	250
Secondary radius (mm)	250
Linear PSD 2Th angular range (°)	3.3
FDS angle (°)	0.5
Beam spill, sample length (mm)	25.4
Intensity corrected	
Full Axial Convolution	
Filament length (mm)	12
Sample length (mm)	25.4
Receiving Slit length (mm)	12
Primary Sollers (°)	2.5
Secondary Sollers (°)	2.5

hkl Phase - 1 Leball method

Phase name	Corindon
R-Bragg	0.902
Spacegroup	r-3c
Cell Volume (Å ³)	254.786(6)
Crystallite Size	
Cry size Lorentzian	1060(190)
k: 1 LVol-IB (nm)	700(200)
k: 0.89 LVol-FWHM (nm)	900(400)

Lattice parameters

a (Å)
 c (Å)

SRM 1976a Certificate

4.75873(5) **4.758877(113)**
 12.99161(16) **12.992877(164)**

h	k	l	m	d	Th2	I	=
0	1	2	6	3.47991	25.57733	10	
1	0	4	6	2.55093	35.15169	84.4	
1	1	0	6	2.37936	37.77866	7.38	
0	0	6	2	2.16527	41.67904	5.72	
1	1	3	12	2.08533	43.35588	50.7	
2	0	2	6	1.96413	46.18067	0.539	
0	2	4	6	1.73996	52.55397	43.4	
1	1	6	12	1.60143	57.50237	223	
2	1	1	12	1.54658	59.74409	1.96	
1	2	2	12	1.51472	61.13354	2.43	
0	1	8	6	1.51088	61.30550	61.8	
2	1	4	12	1.40449	66.52200	46.1	
0	3	0	6	1.37373	68.21347	45.2	
1	2	5	12	1.33598	70.42033	0.323	

12 de febrero de 2016

CITIUS, Tfno. 954559747 - 954559746, Fax. 954559753
 Apdo. 1152, 41080 Sevilla, Spain

2 de 2