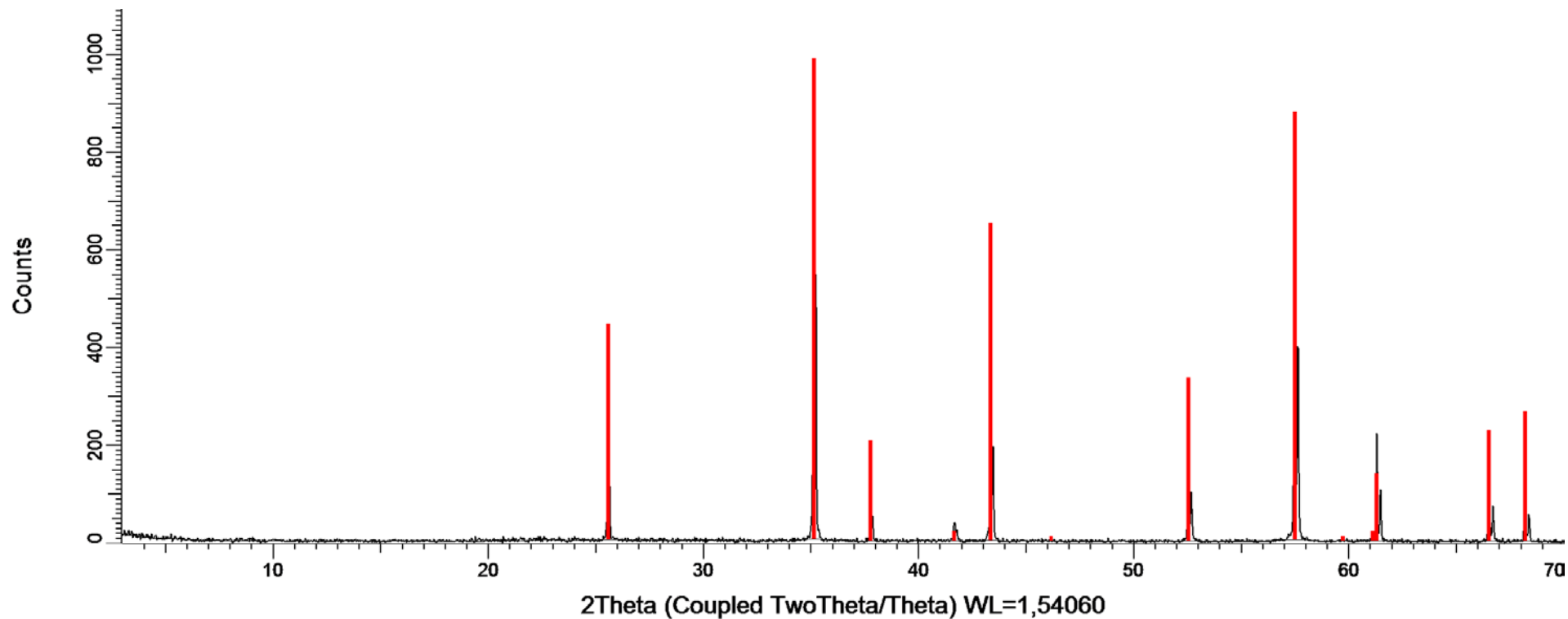




PATRÓN DE CORINDÓN 21-03-18



 CORINDON 21-03-18. Barrido tipo θ - θ con monocromador de grafito. Rango: 3 a 70 $^{\circ}2\theta$. Paso: 0,03. Tiempo por paso: 1 seg. Detector: Centelleo.

 Patrón de Corindón. Trigonal – a 4.7588770 - c 12.992877 – R-3c (167) – Z 6 – V 254.81

22 de marzo de 2018

Corindon D8I-90 con monocromador 21-03-18

R-Values

Rwp : 33.68 GOF : 1.13

Primary radius (mm)	250
Secondary radius (mm)	250
Receiving slit width (mm)	0.2
FDS angle (°)	0.5
Beam spill, Sample length (mm)	25.4
Intensity not corrected	
Full Axial Convolution	
Filament length (mm)	12
Sample length (mm)	25.4
Receiving Slit length (mm)	12
Primary Sollers (°)	2.5
Secondary Sollers (°)	2.5

Corrections

LP Factor 26.4

hkl Phase - 1 Leball method

Phase name	Corindon
R-Bragg	3.329
Spacegroup	r-3c

Cell Volume (Å³) 254.923(12)

Lattice parameters

a (Å)	4.75953(10)	4.758877(113)
c (Å)	12.9942(3)	12.992877(164)

SRM 1976a Certificate

h	k	l	m	d	Th2	I
1	0	-2	6	3.48053	25.57270	0.93
1	0	4	6	2.55141	35.14486	7.3
2	-1	0	6	2.37976	37.77205	0.668
0	0	6	2	2.16570	41.67029	0.506
2	-1	3	12	2.08570	43.34785	4.52
2	0	2	6	1.96447	46.17228	0.0448
2	0	-4	6	1.74027	52.54391	3.58
2	-1	6	12	1.60173	57.49067	19.3
3	-1	1	12	1.54684	59.73296	0.124
3	-1	-2	12	1.51498	61.12200	0.21
1	0	-8	6	1.51118	61.29217	5.19
3	-1	4	12	1.40474	66.50887	4.16
3	0	0	6	1.37396	68.20037	3.91
3	-1	-5	12	1.33622	70.40600	11.5

22 de marzo de 2018

CITIUS, Tfno. 954559747 - 954559746, Fax. 954559753
 Apdo. 1152, 41080 Sevilla, Spain

2 de 2