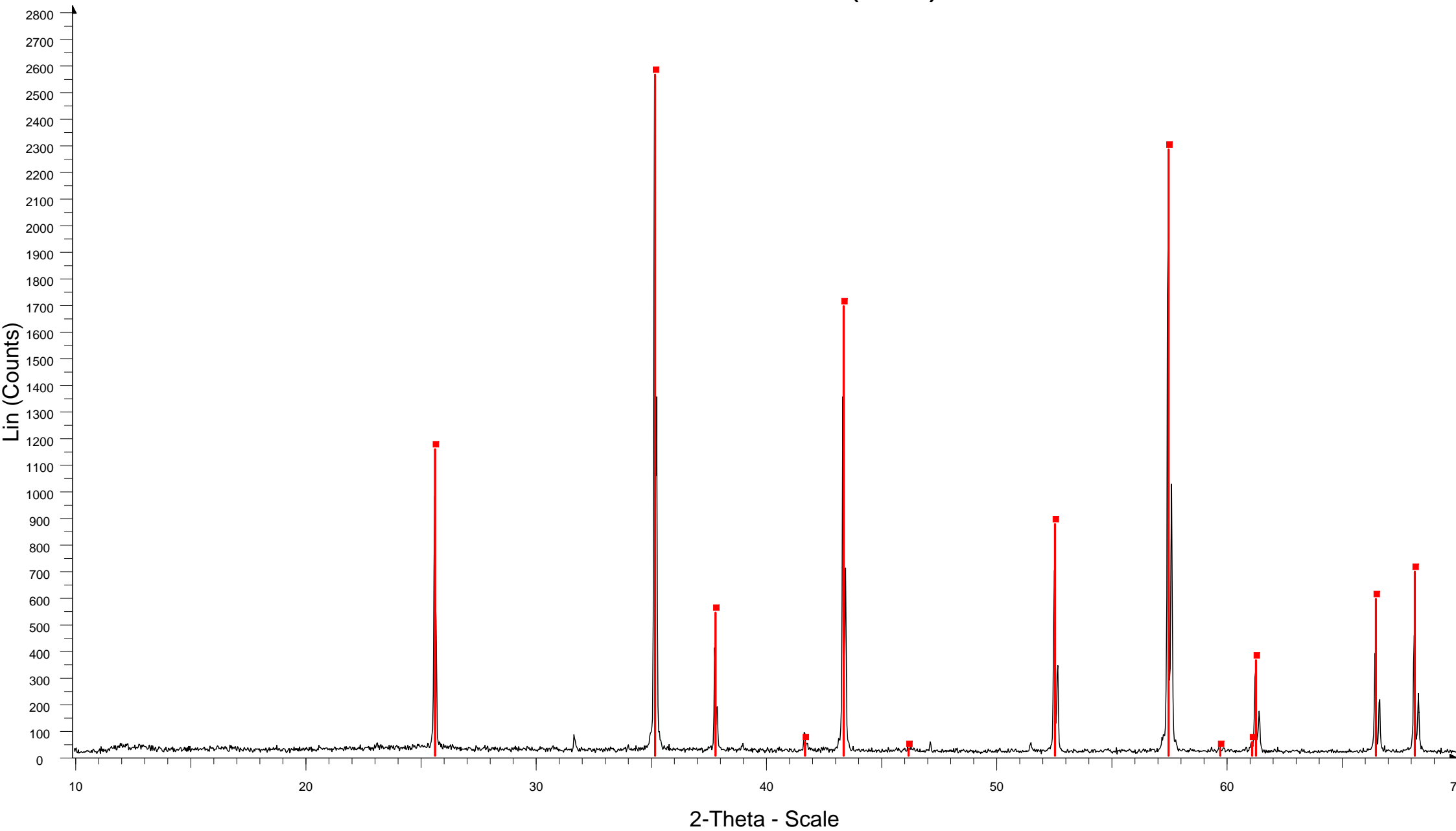


PATRÓN DE CORINDÓN (D8I) 24-11-10



☒ CORINDON(24-11-10) - File: CORINDON(24-11-10).raw - Type: 2Th/Th locked - Start: 3.000 ° - End: 69.990 ° - Step: 0.030 ° - Step time: 1. s - Temp.: 25 °C (Room) - Time Started: 12 s - 2-Theta: 3.000 ° - Theta: 1.500 ° - Chi: 0.0
Operations: Import
☑ 00-046-1212 (*) - Corundum, syn - Al₂O₃ - Y: 100.00 % - d x by: 1. - WL: 1.5406 - Rhombo.H.axes - a 4.75870 - b 4.75870 - c 12.99290 - alpha 90.000 - beta 90.000 - gamma 120.000 - Primitive - R-3c (167) - 6 - 254.808 - I/lc PDF

INFORME DE LA CALIBRACIÓN

Corindon D8I 24-11-10

Range Number : 1

R-Values

Rexp : 15.61 Rwp : 21.60 Rp : 16.30 GOF : 1.38
Rexp` : 22.73 Rwp` : 31.46 Rp` : 28.60 DW : 1.52

Instrument

Primary radius (mm) 217.5
Secondary radius (mm) 217.5
Receiving slit width (mm) 0.2
VDS sample length (mm) 12
Full Axial Convolution
 Filament length (mm) 12
 Sample length (mm) 15
 Receiving Slit length (mm) 12
 Primary Sollers (°) 2.5
 Secondary Sollers (°) 2.5

hkl Phase - 1 Le Bail method

Phase name Corindon
R-Bragg 1.327
Spacegroup r-3c
Cell Mass 0.000
Cell Volume (Å³) 255.0631(79)

Lattice parameters

a (Å) 4.760187(61) **4.758877(113)**
c (Å) 12.99777(23) **12.992877(164)**

SRM 1976a Certificate

h	k	l	m	d	Th2	I	
0	1	2	6	3.48115	25.56809	103	—
1	0	4	6	2.55197	35.13681	295	
1	1	0	6	2.38009	37.76663	41.9	
0	0	6	2	2.16630	41.65836	8.53	
1	1	3	12	2.08605	43.34013	162	
2	0	2	6	1.96477	46.16493	1.86	
0	2	4	6	1.74057	52.53389	90.5	
1	1	6	12	1.60207	57.47733	284	
2	1	1	12	1.54706	59.72373	4.11	
1	2	2	12	1.51520	61.11215	4.62	
0	1	8	6	1.51156	61.27484	42.9	
2	1	4	12	1.40497	66.49657	54.4	
0	3	0	6	1.37415	68.18964	62.7	
1	2	5	12	1.33645	70.39193	0.998	