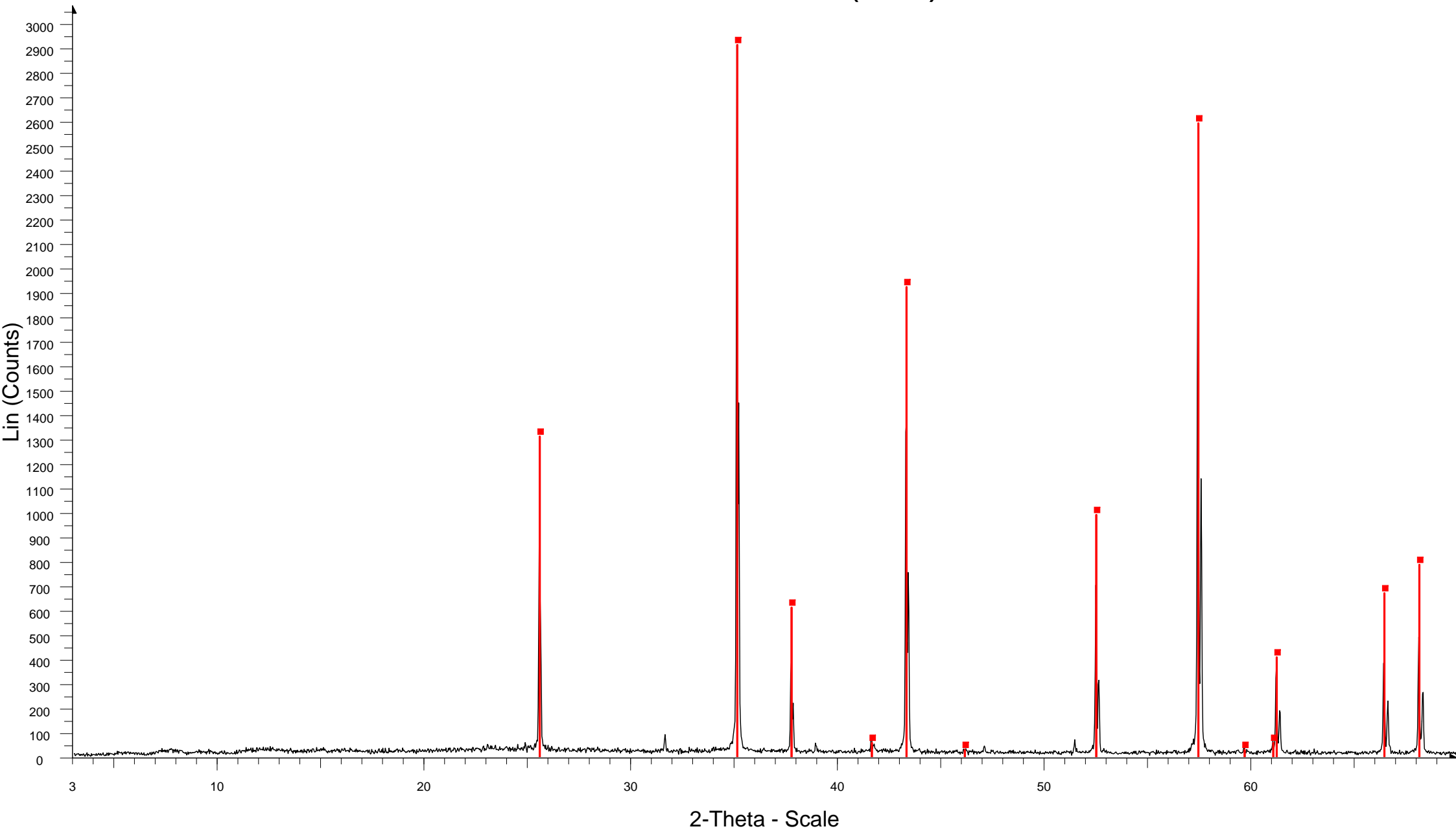


PATRÓN DE CORINDÓN (D8I) 26-05-10



☒ CORINDON(26-5-10)-3 - File: CORINDON(26-5-10)-3.raw - Type: 2Th/Th locked - Start: 3.000 ° - End: 69.990 ° - Step: 0.030 ° - Step time: 1. s - Temp.: 25 °C (Room) - Time Started: 12 s - 2-Theta: 3.000 ° - Theta: 1.500 ° - Chi: 0
Operations: Import
☒ 00-046-1212 (*) - Corundum, syn - Al₂O₃ - Y: 100.00 % - d x by: 1. - WL: 1.5406 - Rhombo.H.axes - a 4.75870 - b 4.75870 - c 12.99290 - alpha 90.000 - beta 90.000 - gamma 120.000 - Primitive - R-3c (167) - 6 - 254.808 - I/lc PDF

INFORME DE LA CALIBRACIÓN

Corindon D8I 26-05-10

Range Number : 1

R-Values

Rexp : 15.61 Rwp : 20.55 Rp : 14.99 GOF : 1.32
Rexp` : 23.11 Rwp` : 30.43 Rp` : 26.87 DW : 1.50

Instrument

Primary radius (mm) 217.5
Secondary radius (mm) 217.5
Receiving slit width (mm) 0.2
Divergence angle (°) 0.51
Full Axial Convolution
 Filament Length (mm) 12
 Sample Length (mm) 15
 Receiving Slit Length (mm) 12
 Primary Sollers (°) 2.5
 Secondary Sollers (°) 2.5

hkl Phase - 1 Le Bail method

Phase name Corindon
R-Bragg 1.007
Spacegroup r-3c
Cell Mass 0.000
Cell Volume (Å³) 255.0827(67)
Wt% - Rietveld 0.000
Strain
 Strain L 0.0128(27)
 Strain G 0.002(11)
 e0 0.00326(97)
Lattice parameters
 a (Å) 4.760323(53) **4.758877(113)**
 c (Å) 12.99803(19) **12.992877(164)**

SRM 1976a Certificate

h	k	l	m	d	Th2	I
0	1	2	6	3.48124	25.56742	104
1	0	4	6	2.55203	35.13597	327
1	1	0	6	2.38016	37.76551	43.1
0	0	6	2	2.16634	41.65751	8.38
1	1	3	12	2.08611	43.33892	181
2	0	2	6	1.96482	46.16357	0.843
0	2	4	6	1.74062	52.53242	85.3
1	1	6	12	1.60210	57.47584	310
2	1	1	12	1.54710	59.72186	3.7
1	2	2	12	1.51524	61.11025	5.16
0	1	8	6	1.51160	61.27342	48.9
2	1	4	12	1.40500	66.49455	61.7
0	3	0	6	1.37419	68.18743	73.4