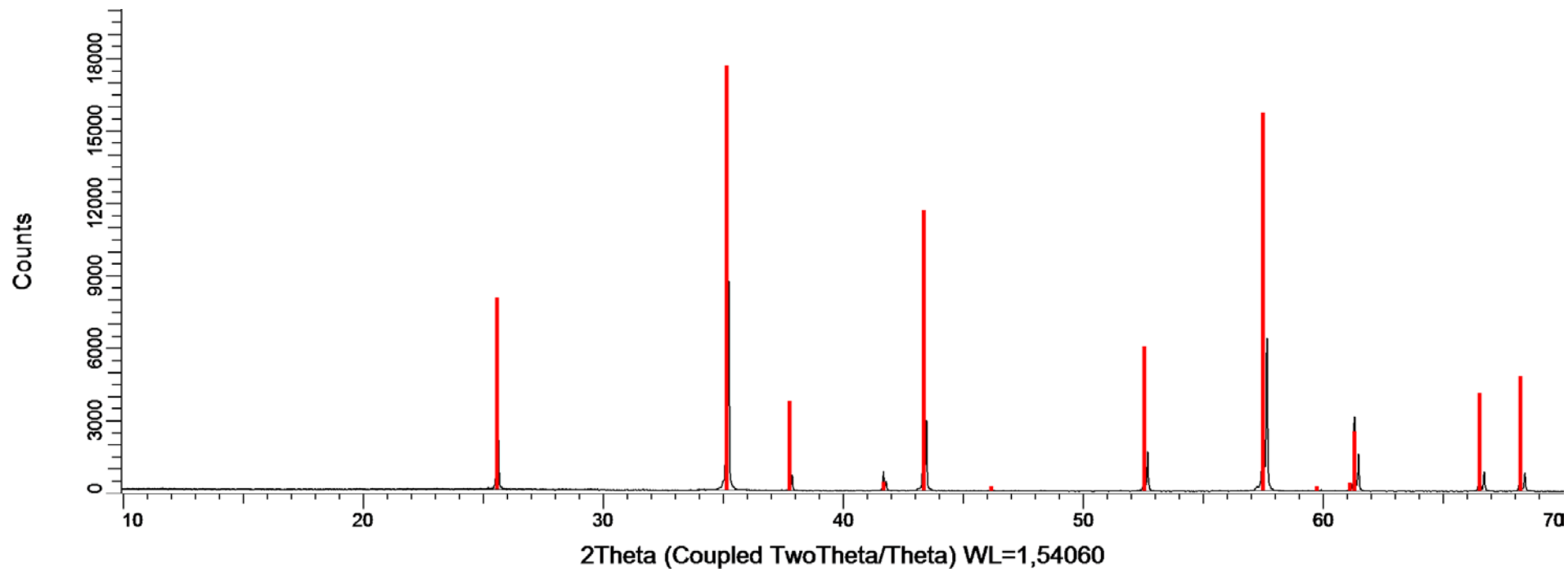


PATRÓN DE CORINDÓN 09-05-16



☒ CORINDON 09-05-16. Barrido tipo θ - θ . Rango: 3 a 70 °2 θ . Paso: 0,015. Tiempo por paso: 0,1 seg. Detector: Lynxeye.

☒ Patrón de Corindón. Trigonal – a 4.7588770 - c 12.992877 – R-3c (167) – Z 6 – V 254.81

10 de mayo de 2016

Corindon D8I-90 09-05-16

R-Values

Rwp : 11.40 GOF : 1.64

Instrument

Primary radius (mm)	250
Secondary radius (mm)	250
Linear PSD 2Th angular range (°)	3.3
FDS angle (°)	0.5
Beam spill, sample length (mm)	25.4
Intensity corrected	
Full Axial Convolution	
Filament length (mm)	12
Sample length (mm)	25.4
Receiving Slit length (mm)	12
Primary Sollers (°)	2.5
Secondary Sollers (°)	2.5

hkl Phase - 1 Leball method

Phase name	Corindon
R-Bragg	0.743
Spacegroup	r-3c
Cell Volume (Å ³)	254.803(6)
Crystallite Size	
Cry size Lorentzian	960(150)
k: 1 LVol-IB (nm)	600(110)

Lattice parameters

a (Å)
c (Å)

SRM 1976a Certificate

4.75884(5) **4.758877(113)**
 12.99189(14) **12.992877(164)**

h	k	l	m	d	Th2	I	
0	1	2	6	3.47999	25.57674	10.1	
1	0	4	6	2.55098	35.15089	84.1	
1	1	0	6	2.37942	37.77776	7.36	
0	0	6	2	2.16532	41.67810	5.72	
1	1	3	12	2.08538	43.35484	50.1	
2	0	2	6	1.96418	46.17955	0.463	
0	2	4	6	1.74000	52.55269	43.1	
1	1	6	12	1.60146	57.50098	224	
2	1	1	12	1.54662	59.74257	1.89	
1	2	2	12	1.51475	61.13198	2.27	
0	1	8	6	1.51091	61.30403	60.8	
2	1	4	12	1.40452	66.52028	45.3	
0	3	0	6	1.37376	68.21167	44.3	
1	2	5	12	1.33601	70.41849	0.615	

10 de mayo de 2016