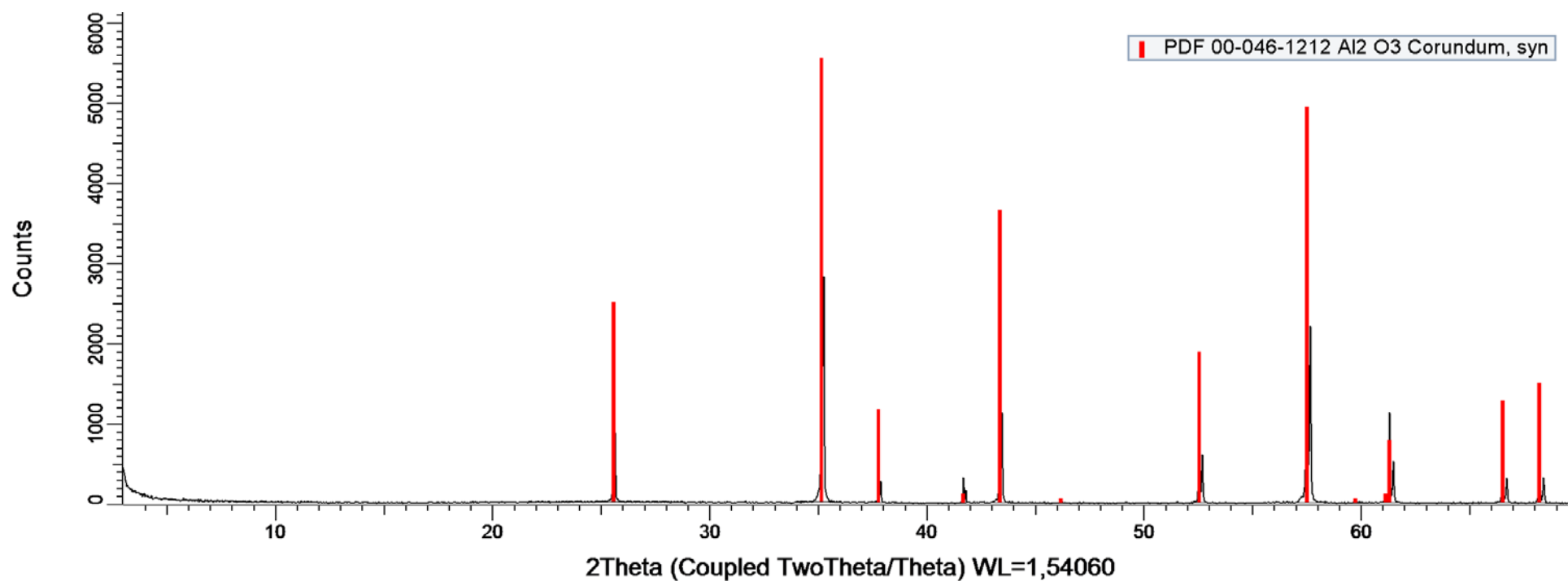
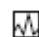



PATRÓN DE CORINDÓN 23-02-17



 CORINDON 23-02-17. Barrido tipo θ - θ . Rango: 3 a 70 $^{\circ}2\theta$. Paso: 0,03. Tiempo por paso: 0,1 seg. Detector: Lynxeye XE.

 Patrón de Corindón. Trigonal – a 4.7588770 - c 12.992877 – R-3c (167) – Z 6 – V 254.81

01 de marzo de 2017

Corindon DISCOVER II 23-02-17

R-Values

Rwp : 20.15 GOF : 1.54

Instrument

Primary radius (mm)	280
Secondary radius (mm)	280
Linear PSD 2Th angular range (°)	2.58
FDS angle (°)	0.5
Beam spill, sample length (mm)	25.4
Intensity corrected	
Full Axial Convolution	
Filament length (mm)	12
Sample length (mm)	25.4
Receiving Slit length (mm)	12
Primary Sollers (°)	2.5
Secondary Sollers (°)	2.5

hkl Phase - 1 Le Bail method

Phase name	Corindon
R-Bragg	1.381
Spacegroup	r-3c

Cell Volume (Å ³)	254.781(7)
-------------------------------	------------

Crystallite Size

Cry size Lorentzian (nm)	1200(500)
k: 1 LVol-IB (nm)	700(300)
k: 0.89 LVol-FWHM (nm)	1000(400)

Lattice parameters

a (Å)	4.75866(6)	4.758877(113)
c (Å)	12.99175(15)	12.992877(164)

SRM 1976a Certificate

h	k	l	m	d	Th2	I	
0	1	2	6	3.47989	25.57751	4.33	
1	0	4	6	2.55093	35.15166	27.9	
1	1	0	6	2.37933	37.77922	3.68	
0	0	6	2	2.16529	41.67859	2.36	
1	1	3	12	2.08531	43.35627	19.9	
2	0	2	6	1.96411	46.18126	0.173	
0	2	4	6	1.73994	52.55438	18.3	
1	1	6	12	1.60143	57.50242	77.4	
2	1	1	12	1.54656	59.74501	0.932	
1	2	2	12	1.51470	61.13441	1.29	
0	1	8	6	1.51089	61.30502	22.8	
2	1	4	12	1.40448	66.52272	17.5	
0	3	0	6	1.37371	68.21458	23.6	
1	2	5	12	1.33597	70.42095	0.0362	

01 de marzo de 2017

CITIUS, Tfno. 954559747 - 954559746, Fax. 954559753
 Apdo. 1152, 41080 Sevilla, Spain

2 de 2