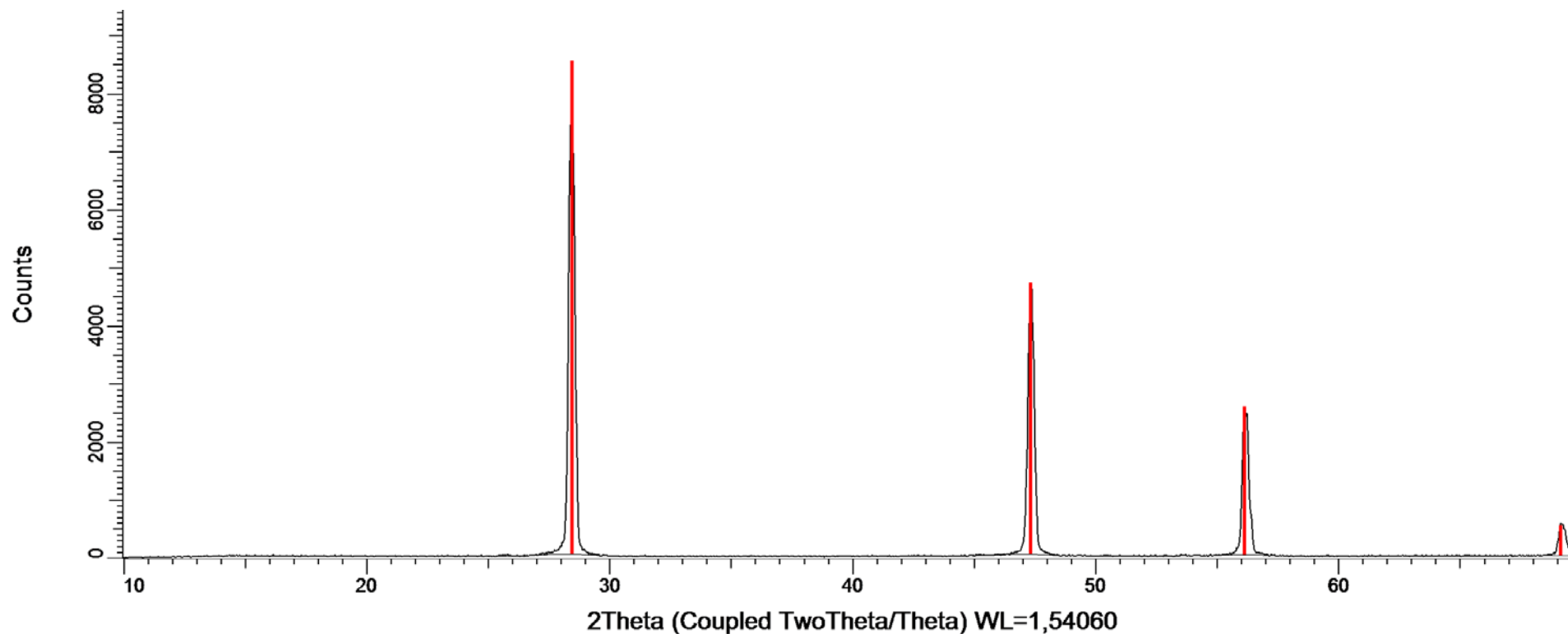


## PATRÓN DE SI NIST SRM 640C 16-04-15



- SI NIST XRK900 16-04-15. Barrido tipo  $\Theta$ - $\Theta$ . Rango: 10 a 70  $^{\circ}2\Theta$ . Paso: 0,03. Tiempo por paso: 0,1 seg. Cámara: XRK900. Detector: VANTEC.
- Patrón de SI NIST 640c. Cúbico – a 5.43088 - b 5.43088 - c 5.43088 -  $\alpha$  90.000 -  $\beta$  90.000 -  $\gamma$  90.000 – Centrado en las caras – Fd-3m (227) – Z 8 – V 160.181

20 de abril de 2015

**INFORME DE CALIBRACIÓN XRK900**

**Si NIST 640c D8C 16-04-15**

**R-Values**

Rwp : 14.35      GOF : 1.60

**Instrument**

Primary radius (mm)	200.5
Secondary radius (mm)	200.5
Linear PSD 2Th angular range (°)	12
FDS angle (°)	0.6
Beam spill, sample length (mm)	14
Intensity not corrected	
Full Axial Convolution	
Filament length (mm)	12
Sample length (mm)	14
Receiving Slit length (mm)	12
Primary Sollers (°)	4
Secondary Sollers (°)	4

**hkl Phase - 1 Le Bail method**

R-Bragg	0.550
Spacegroup	227
Cell Volume (Å <sup>3</sup> )	160.059(45)
Crystallite Size	
Cry size Gaussian (nm)	53.8(15)
k: 1 LVol-IB (nm)	50.3(21)
k: 0.89 LVol-FWHM (nm)	47.8(16)

**Lattice parameters**

a (Å)	<b>NIST 640c</b>	<b>Certificate</b>
	5.42950(51)	<b>5.43311946(92)</b>

h	k	l	m	d	Th2	I	
1	1	1	8	3.13472	28.45005	84	
0	2	2	12	1.91962	47.31603	161	
3	1	1	24	1.63706	56.13853	136	
2	2	2	8	1.56736	58.87339	0.00674	
0	0	4	6	1.35737	69.15089	56.8	

20 de abril de 2015